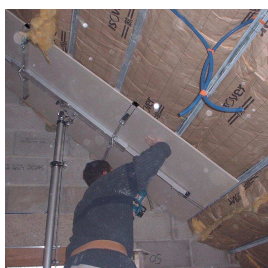


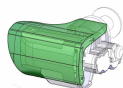
The Electric Drywall Lifter is design to reduce labor cost,
One person can easily operate it.
It's suitable for position of drywall board, panel, insulation boards and similar

- The distance of two arms up to 3,58 m to take sheets up to 4' x 16'.
- **It's can be operate in horizontal, vertical and ceiling positioning.**
- Vertical loading height without ground clearance.
- Mounted on wheels of caster with break for easily movement.
- **Set-Up without tools** : The legs can be release or fold in seconds without tools.
- Telescoping legs versatile and infinitely adjustment, available use in uneven ground, like stairway
- Electric remote control with variable speed switch
The **variable speed** control can be soft start or adjust the micro operating height.
- Emergency Stop Button, for stop raising / lowering immediately in case of emergency.
- Manual operating in case of power failure.
- Completely portable, light weight design to easy carry and transport it.
- Telescoping Mast : constructed by heat treated, robust aluminum, compact and reliability.
- **Automatic Overload breaker**: it equipped to prevent to over weight loading.
- Voltage 230 V or 110 V - 50 / 60 Hz.
- Cradle load capacity : 70 kg - Cradle weight 12 kg
Distance of two arms with outriggers 3,58 m

DW	Lifting height	Ground opening	Mast Load capacity	Cradle Load capacity	Basic height	Mast weight	Cradle weight
DW 340	3,40 m	1,06 m x 1,06 m	120 kg	70 kg	1,02 m	26 kg	8 kg
DW 520	5,20 m	1,43 m x 1,48 m	90 kg	70 kg	1,30 m	38 kg	8 kg



Accessories



Motor cover
Protection for
dusty atmosphere



Load - platform
750 x 450 mm