

Up to 3,3 m lifting

The UPTER CM 340 is an essential piece of equipment for any business involved in fitting of Patio and Terrace covers

This electric portable lifting equipment will give your business the edge over your competition.

Better deploy manpower on site, make lifting jobs easier and the overall installation of loads



- Constructed by heat treated, robust aluminum, compact
- Telescoping masts
- Set-Up without tools in seconds without tools.
- 4 Legs, versatile and infinitely adjustment, available use in uneven ground with special design can let you **working close to the wall** (design UPTER)
- Motor 230 V or 110 V - 50 60 Hz.
- The **variable speed** control can be soft start or adjust the micro operating height.
- Emergency Stop Button. Press the button for stop raising / lowering immediately.
- Manual operation incase of power failure
- **Automatic mecanical overload breaker**: it equipped to prevent to over weight loading.
- Level to ensure the proper set-up while and adjusting the telescoping legs

Basic height	Lifting height	Load capacity	Weight (*)	Dimensions closed	Dimensions operating
970 mm	3,3 m	130 kg à 3,0 m 120 kg à 3,3 m	21 kg	300 x 300 mm	1100 x 1000 mm

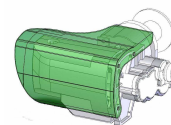
(*) = Platform 440 x 750 mm, weight 5,3



Other applications, installation of awnings or glass



Accessories



Motor cover
Protection against dust



Platform outrigger
Lenght 2 x 380 mm



Set of wheels
1 x for the mast
1 x on each foot



Glass cradle

Features



Manual operation
with handle



4 telescoping legs for uneven ground and
Operation in confined space.
and special design to work close to the wall



Level
To check if the lifter is
on the correct position

